



Kapture Group, Inc

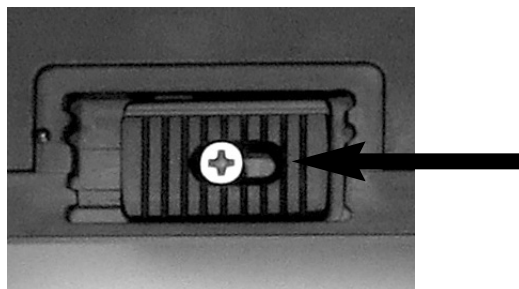
Sliding Back Adapter Instructions

The **Kapture Group Sliding Back Adapter** mounts directly to the rear standard of your view camera. Adapter boards are available for most 4x5 and 6x9 view cameras. A 4x5 Universal Graflok interface is also available instead of a view camera specific interface.

Attaching the digital back: The Sliding Back Adapter is designed to accept Hasselblad, Hasselblad H (see note), Mamiya 645AFD and Contax 645 digital backs. The digital back is mounted to the sliding back adapter via a camera specific drop-in insert illustrated below. The drop-in insert plate is designed to be attached either vertically or horizontally for portrait or landscape imaging.

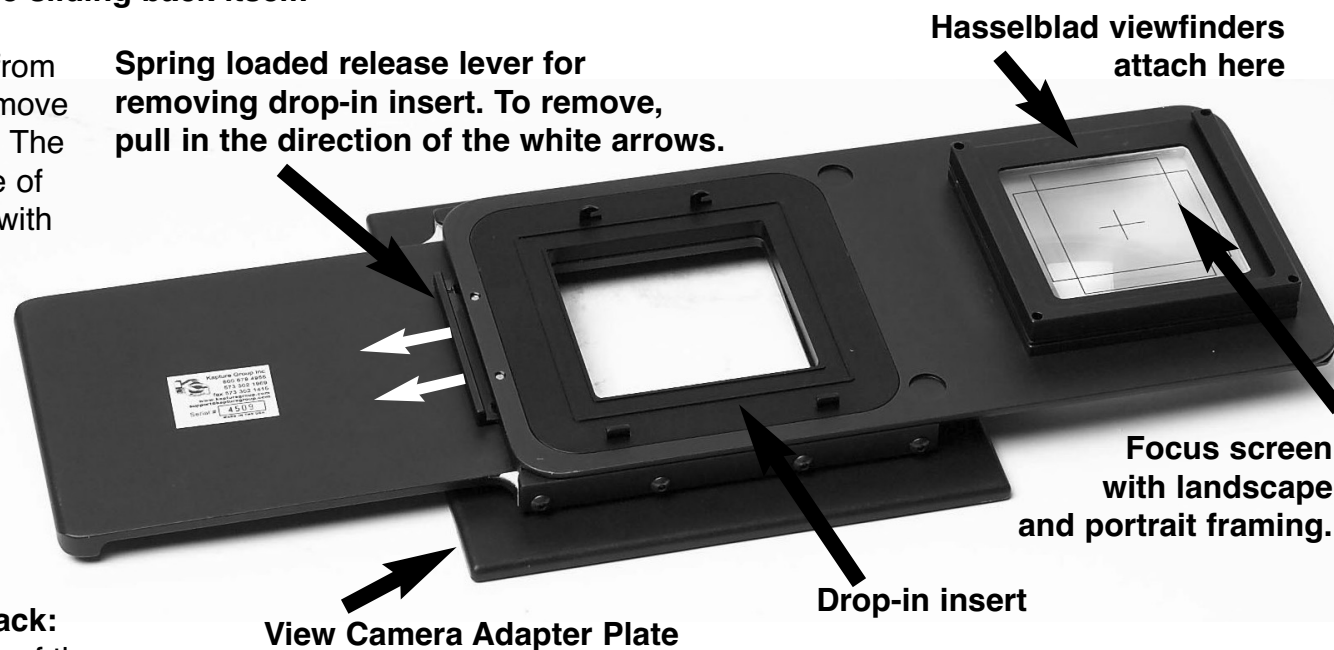
To remove the drop-in insert first pull on the spring loaded release lever in the direction of the white arrows as illustrated below. When attaching the drop-in, be sure it is flush on all sides before releasing lever to re-engage. The exception is the H mount version. It will seat evenly a bit higher than the main sliding plate. You may find it is easier for you to attach your digital back to the drop-in first, then insert the drop-in into the Sliding Back. **Important: Do not use your digital back as a handle for sliding between framing and capture, use the sliding back itself.**

Please note: To remove a digital back from the **H drop-in insert** you **MUST** first remove the drop-in insert from the Sliding Back. The H release pin is located on the backside of the drop-in insert and is not accessible with the insert attached to the Sliding Back.



Attaching & removing an H digital back: Move the release lever on the rear side of the insert in the direction of the arrow above.

Spring loaded release lever for removing drop-in insert. To remove, pull in the direction of the white arrows.



Kapture Group Inc. - 92 Bent Shadow Ln - Osage Beach, MO 65065
800 879 4955 - 573 302 1969

© Copyright - 2013 Kapture Group Inc - all rights reserved